

Raid Extreme 2025

**Location:**

Catamaranclub Omaha
At Jachthaven Lauwersmeer,
Oostmahorn 31
9133 DT Oostmahorn

Programme

Friday 5 September

Arrival at catamaran club Omaha

1800 skippers meeting at Omaha Beach

Saturday 6 September

0654 race start at sunrise

1700 race finish

Sunday 7 September

Sleep late. Maybe a little tour in company around the lake, swap boats

Contacts:

Koos Winnips +31 6 47 27 62 47

Hubert Bakker +31 6 51 22 74 10

Why?

We want a challenge with no hassles, just being on the water longer than you are used to, pushing your limits, whatever they are. No handicaps or cheating. 'Raid Extreme' is synonymous to challenging yourself, whatever that means. It is perfectly alright to just show up, sail to the island to eat your lunch and meet up with friends. And it is perfectly alright to squeeze your last drop of energy into a race against the clock. Your choice. And after 1700 it is all over and we can celebrate.

The spirit of the event is: "Bring your own". Organising a full-on sailing event without sponsoring a small group is extremely expensive. If we all agree on 'bring your own,' the event can cost nothing, because there is no organisation, no marketing, no sponsoring, no catering, no rescue boats, no race committee. We give you a set of GPS locations to help you navigate and buy some silly stuff for the prize giving ceremony. You bring your own stuff and your own fun. With this minimal organisation we can have maximum freedom and fun for the participants.

Race description

There will be 6 checkpoints on the lake. You will sail to those checkpoints to a route of your own choice. The checkpoints are the GPS locations listed at the end of this document. We will trust you when you declare which checkpoints you have made. Just navigate to the checkpoint. It will be nice to notify you have made it by posting a nice picture in the Raid Whatsapp group.

Prizes: Gold: 6 checkpoints, Silver: 5 checkpoints, Bronze: 4 checkpoints. Additional prizes will be given by the executive prize awarding committee. Racing will be according to regulations below, and BPR regulations ("binnenvaartpolitiereglement"). In any dispute about rules and regulations, the race management will decide.



Skippers meeting

Friday around 1800 at Omaha Beach.

Start-finish

The race will start at Omaha beach. The start signal will be given at 0654 hours on Saturday 6 Sept. After the start signal go to your boat (either at Omaha beach or in the marina) and start racing.

The finish is at Omaha clubhouse before 1700 hours. To finish you must return your sheet with GPS locations and times.

Prizegiving

Saturday afternoon around 1745 hours.

Followed by BYO barbecue.

Time limit

You may finish until 1700 hours on Saturday 6 Sept. If you finish after 1700 hours, you will lose 2 checkpoints.

Disclaimer: by competing in this event, you agree that the race management has no responsibility for your safety or well-being whatsoever.

Checkpoint Locations

We will use checkpoints to which you must navigate.

You will find a list with checkpoints and approximate GPS locations at the end of the document.

We don't actually check if you have been at the checkpoints so just note down the arrival times before you hand in the document on return.

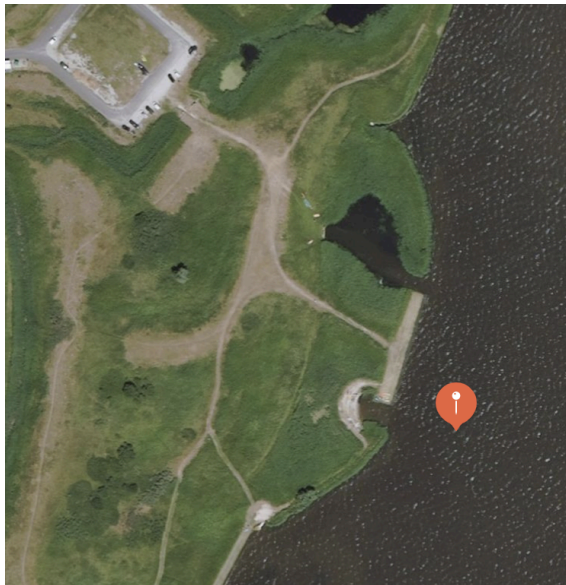
Most checkpoints require you to enter a harbour and sail out again. Enjoy yourselves!

Hoek van de Bant

Aim for the narrow sandy beach (5-10m wide).

You have reached the checkpoint if the depth before the sandy beach gets below 1m.

If there is room you may beach your boat and cheer the bigger boats as they run aground.

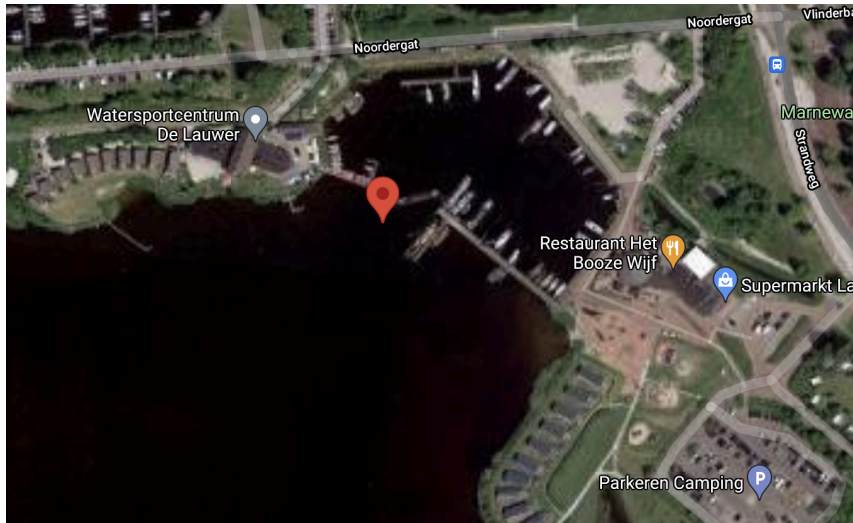


Booze Wijf

This is a restaurant overlooking a museum harbour with traditional boats.

You have reached the checkpoint on entering the harbour. No need to moor at the jetty unless

you want to stop to visit the supermarket, toilets, snackbar, or restaurant depending on your needs.



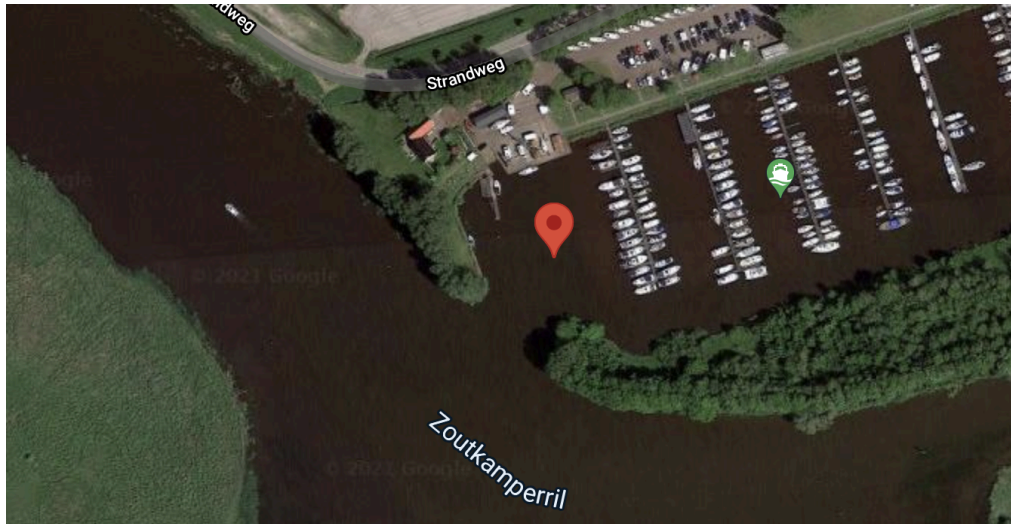
Gin and Tonic Island (Oude Robbengat)

Since there are two 'Marrekrite' islands in the 'Oude Robbengat' it is easy to get confused. For the 2025 Raid we selected the southern 'Marrekrite' island which is easily accessed from all corners. For returning visitors: this is Gin and Tonic island, the more Northern island is May Tai island. Head for STG4 and then navigate towards the 'Marrekrite' sign. You have reached the checkpoint when entering the little harbour. If you go ashore, you can mix a cocktail, eat your lunch or take a pee in the bushes - or all of the above.



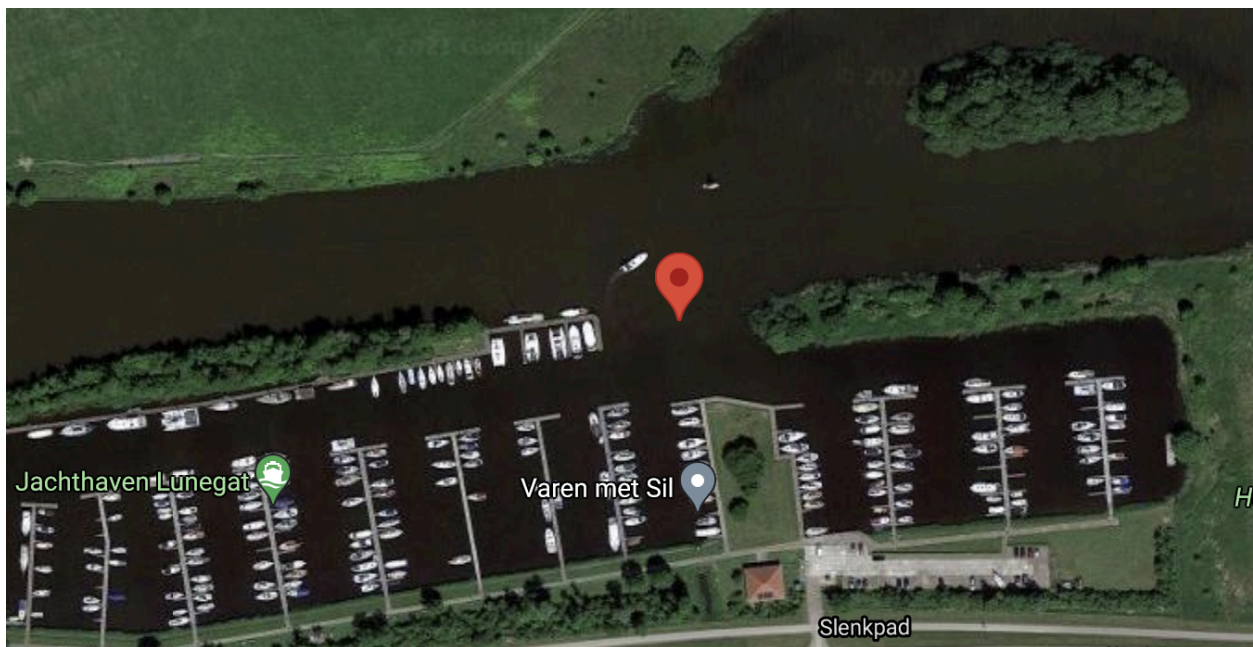
Hunzegat (Zoutkamp)

You have reached the checkpoint once your boat has entered the marina. You may enter the harbour for coffee or a snack or to visit the small chandlery.



Lunegat

You have reached the checkpoint once your boat has entered the marina. There is a snackbar and a restaurant.



Ezumazijl

Ezumazijl is a small harbour at the end of a narrow and winding canal. Space is tight here. You have reached the checkpoint when the canal branches to the left. If you want, you can navigate all the way to the locks. It is a very nice sight.



Boats and crew regulations

Your vessel should primarily be made for floating (no bikes, unless it is a Wetbike of course!). Do not use an engine. Finish with the same crew that you started with. Do not drop your crew overboard. Boat swaps are not allowed. You can bring more boats and decide on the day which one you race.

Navigation, prohibited areas

Big parts of Lauwersmeer are a nature reserve (you may even spot the occasional sea eagle).

Do not enter the protected areas (marked red-white-red signs, see map).

Most importantly, do not enter the prohibited area at the north shore of the Lauwersmeer. You may get into trouble by the dangerous currents here. You may be fined by the police and will certainly be disqualified by race management.

When heading for (or returning from) the Booze Wijf, follow the shipping channel. When following the shipping channel, the wind may be blocked by the trees on the island next to it. The kitesurf area at the north shore is marked with yellow buoys but you may navigate this area.

Shallows: outside the shipping channels (marked by red and green buoys, or red/white and green/white buoys) the lake is quite shallow, often less than 1m. The bottom is mud or sand.

You will race without support. So, no support boats, no food or water drops, nobody to call for information. You can help each other along the way, but nothing in an organized way. All help you get should be available for all racers.

Safety

Lauwersmeer can be a dangerous place, with a lee shore kicking up substantial waves. Wear your life jacket. Make sure your boat and you are ready to tackle the conditions. You compete on your own risk and account. Make sure your insurance is up to scratch (check!).

Omaho Clubhouse (aka 'House of exhausted and disillusioned sailors')

During race day the clubhouse at the Omaha Catamaran Club will be open. You can relax here, have a cup of soup, and track the progress of participants. This will also be the place to finish.

Camping, spectators, shopping and sightseeing

Camping is at the Jachthaven Lauwersmeer (<http://www.jachthavenlauwersmeer.nl/>) between the restaurant/office and the marina. Tents must be close to each other on the grass, campers on the hard. Be sure to register and pay at the office of Jachthaven Lauwersmeer and follow their instructions.

Shopping: 'Plus' supermarket in Anjum

(https://www.plus.nl/supermarkten/anjum_plus-rosier_828)

Open from 0800 - 2000, Sundays from 1200 -1700

Chandlery: Jachthaven Lauwersmeer, Jachthaven Hunzegat or at the CIV store in Lauwersoog (fishing harbour): <https://civ-lauwersoog.nl/>

Restaurants:

Raadsel van de Wadden - 2 mins walk - <https://restaurantlauwersmeer.nl/>

De Blije Dobber (fka Gouden Stek) - 6 minutes walk - <https://deblijedobber.nl/>

Iterij bij de Mune - 5 minutes by car - <https://www.snackcentrumanjum.nl/>

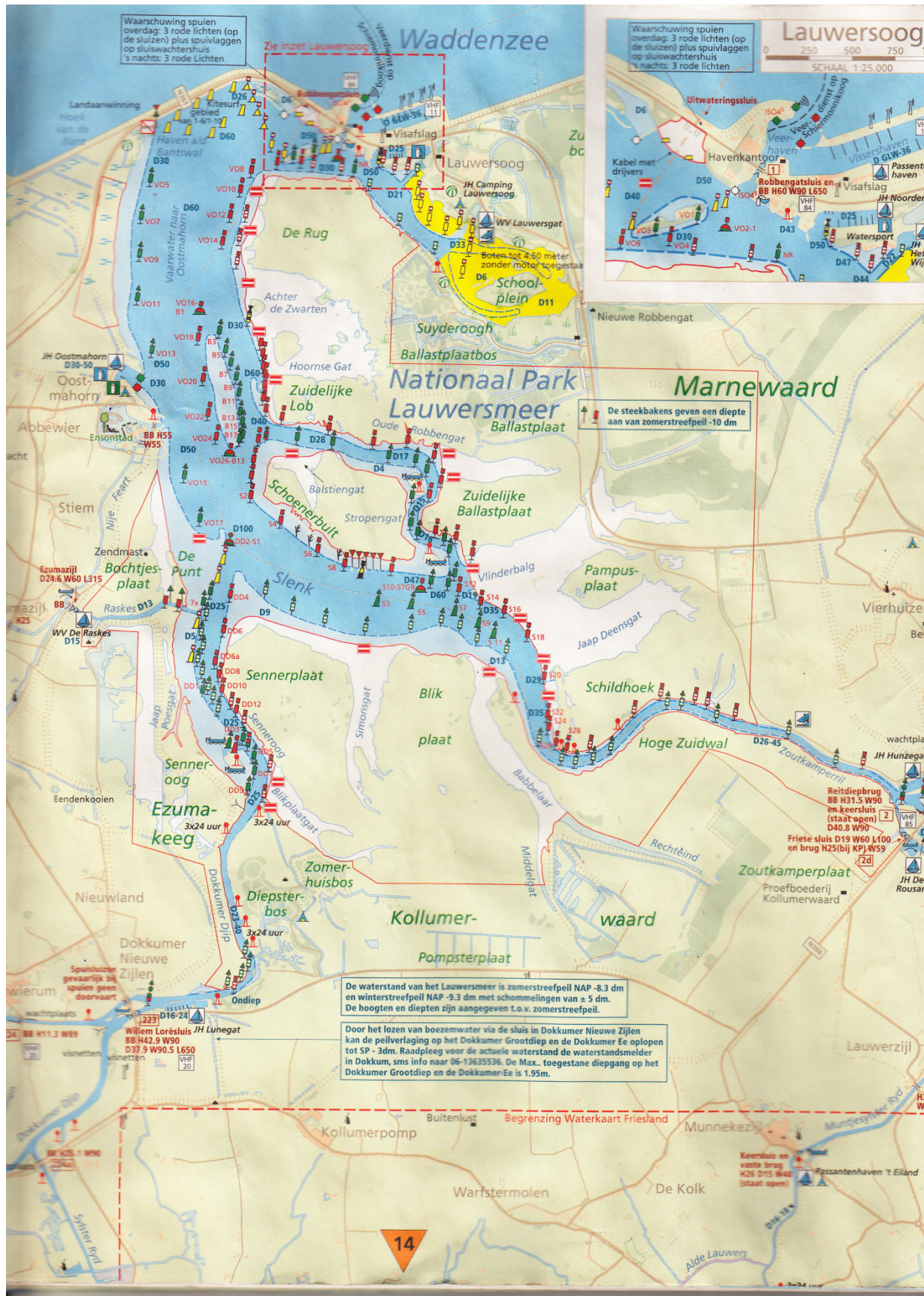
In 2024 we had dinner at Iterij by de Mune with 33 persons on the Friday evening. Watch the messages on the Signal group if you want to join.

Het Raadsel and De Blije dobber may be open for drinks, snacks and lunch from 1100 onwards. If you want to have dinner at Raadsel van de Wadden and De Blije Dobber it is advice to contact them a couple of days in advance or make reservations online.

Family and friends are welcome at the Omaha clubhouse. Bring binoculars if you want to see some of the action. You may also get a view from the restaurant at Jachthaven Lauwersmeer.

Trips:

Book the Vlinderbalg (<https://www.lauwersmeer.nl/tochten/>) for a cruise around the Lauwersmeer, to Schiermonnikoog or Dokkum. (Stops at the jetty near the lock in Oostmahorn). Or take the ferry from Lauwersoog to Schiermonnikoog, rent bicycles and have some coffee at the famous hotel van der Werff. <https://www.wpd.nl/schiermonnikoog/>



Checkpoints Declaration Raid Extreme 2025

Date	06-09-2025
Skipper	
Boat Name	

Checkpoint	Location (approx)	Time of Arrival
Hoek van de Bant	53°24'20.4"N 6°09'39.5"E	
Booze Wijf	53°24'15.5"N 6°12'31.0"E	
Gin and Tonic Island (Oude Robbengat)	53°21'52.3"N 6°12'43.0"E	
Hunzegat (Zoutkamp)	53°20'23.8"N 6°17'34.4"E	
Lunegat (Dokkumer Nieuwe Zijlen)	53°19'05.9"N 6°10'08.4"E	
Ezumazijl	53°21'33.9"N 6°09'53.4"E	
Finish at Omaha Beach	53°22'54.0"N 6°09'37.2"E	